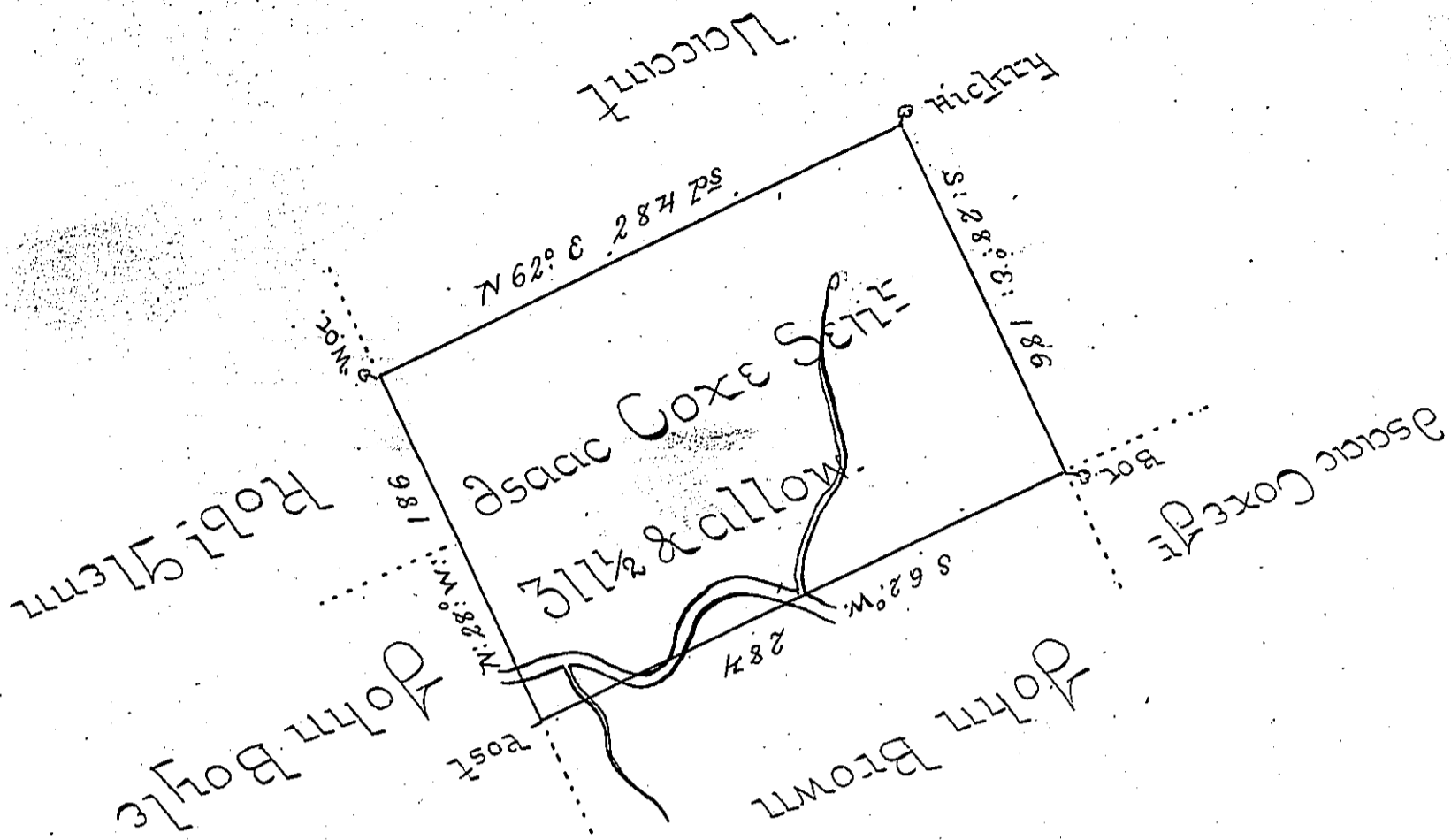


Sug. Loaf & Butler

Luzerne



A Draught of a Tract of land called Newport  
 Situate on a large Branch of Nescopeck  
 Creek about half a mile Eastward of the path  
 leading from Nescopeck Falls to Fort Allen -  
 adjoining land Surveyed for Robert Glenn &  
 John Boyle in the County of Northumberland  
 containing three hundred and Eleven Acres & a  
 half Acre besides the usual Allowance of 6<sup>p</sup>  
 Cent for Roads & <sup>7</sup>a Surveyed the 9<sup>th</sup> Day of Nov-  
 ember 1773 for Isaac Cox Senr in pursuance of  
 a Warrant Dated the 6<sup>th</sup> Day of Aug<sup>r</sup> 1773 -

By John Lukens Esq<sup>r</sup> by Chas Stewart D<sup>r</sup> Sur<sup>r</sup>  
 Survey<sup>r</sup> Gen<sup>l</sup>

IN TESTIMONY that the above is a copy of the original remaining on file in  
 the Department of Internal Affairs of Pennsylvania, made  
 conformably to an Act of Assembly approved the 16th day of  
 February, 1833, I have hereunto set my Hand and caused  
 the Seal of said Department to be affixed at Harrisburg,  
 this ninth day of May 1904.

*Loach R Brown*  
 Secretary of Internal Affairs.

